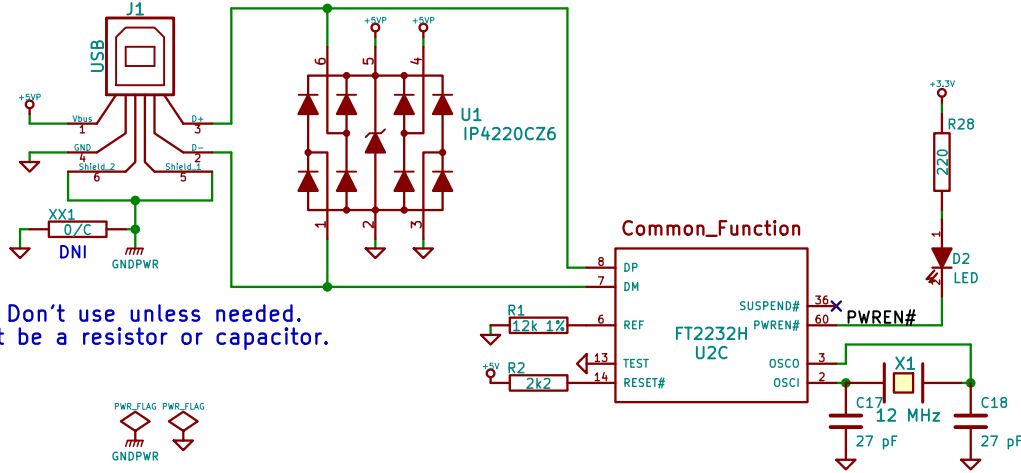


USB

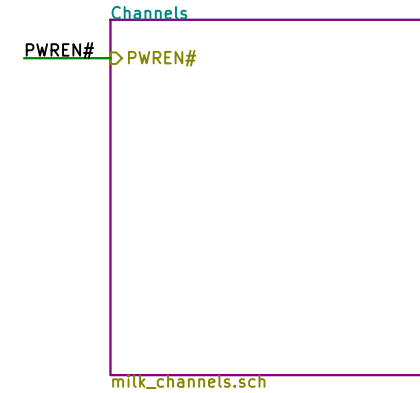
USB protection is optional



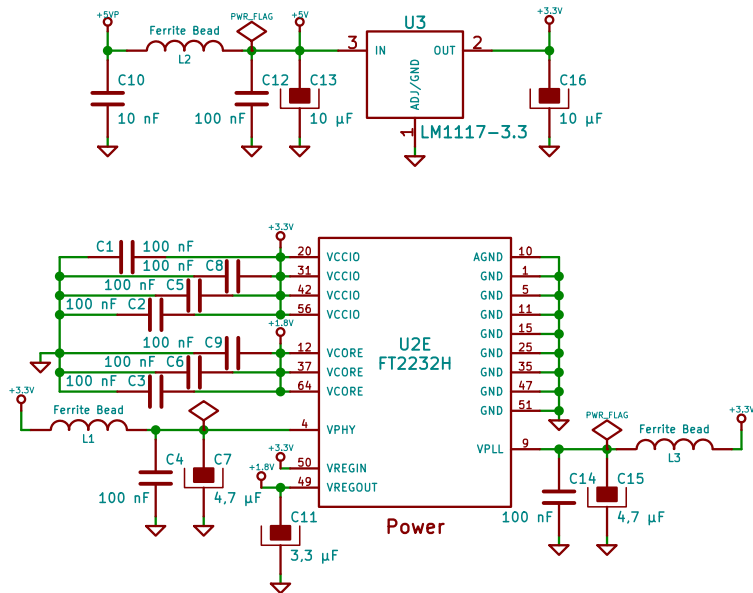
XX1: Don't use unless needed. Might be a resistor or capacitor.



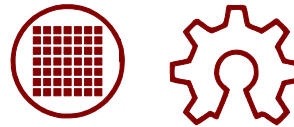
I/O Channels



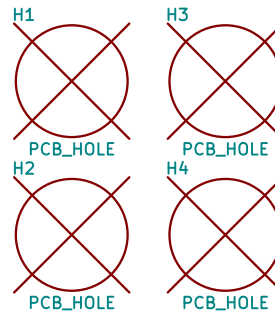
Power



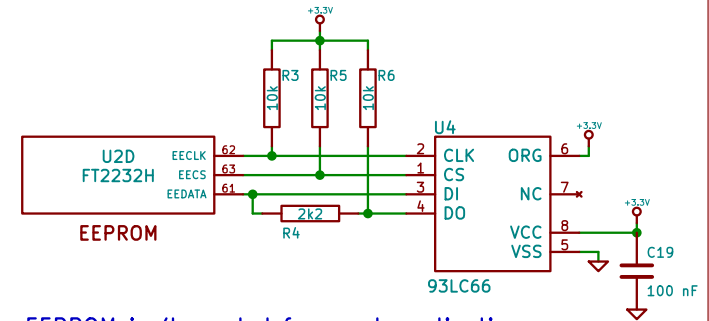
MILK



INTI open hardware



EEPROM



The EEPROM isn't needed for most applications. R3, R4, R5, R6, C19 and U4 are optional.

<http://fpgalibre.sf.net/Milk/>

Main sheet
 Author: Salvador E. Tropea – Revision: Diego J. Brengi
 For more information visit: <http://fpgalibre.sf.net/Milk/>
 For license information read the LICENSE.txt file

INTI – CMNB

Sheet: /
 File: milk.sch

Title: MILK – Multiple Interface Light Kit (\$Revision: 1.11 \$)

Size: A4 Date: 22 oct 2015

KiCad E.D.A. kicad 4.0.5+dfsg1-4

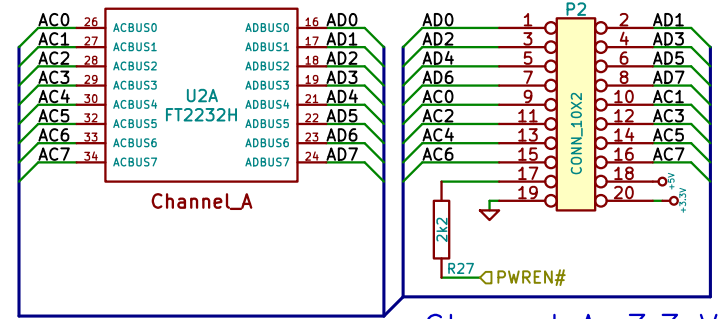
Rev: In Title

Id: 1/2

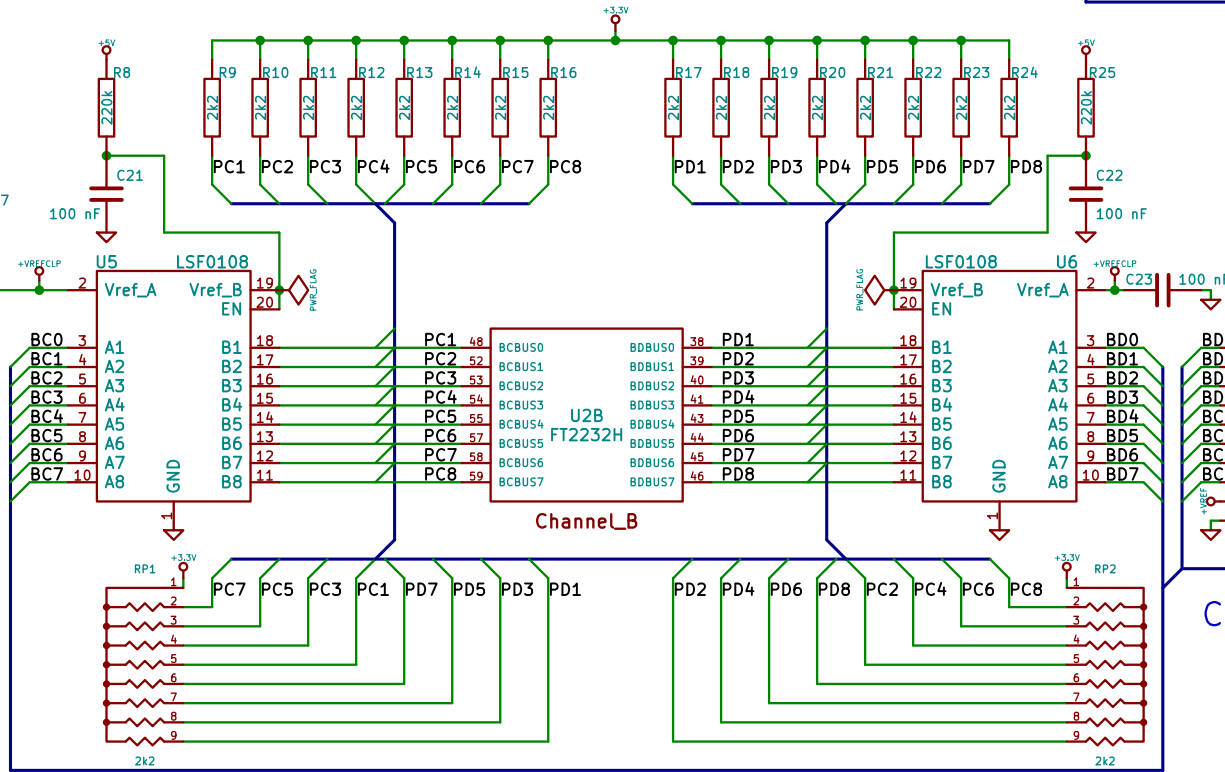
MILK



INTI open hardware



Channel A: 3.3 V
5 V tolerant



Channel B: 0.95 to 5 V

RP1 and RP2 are a replacement for R9 to R24.
Optional: using a socket RP1 and RP2 can be replaced for other values.

Channels
 Author: Salvador E. Tropea – Revision: Diego J. Brengi
 For more information visit: <http://fpgalibre.sf.net/Milk/>
 For license information read the LICENSE.txt file
INTI – CMNB
 Sheet: /Channels/
 File: milk_channels.sch
Title: MILK – Multiple Interface Light Kit (\$Revision: 1.9 \$)



Size: A4	Date: 14 may 2015	Rev: In Title
KiCad E.D.A.	kicad 4.0.5+dfsg1-4	Id: 2/2